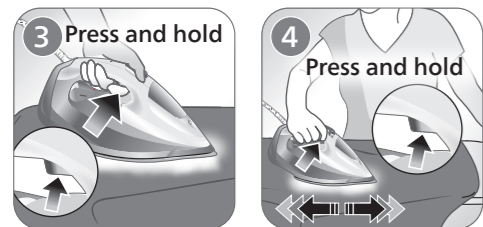
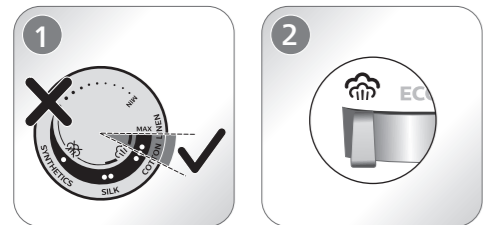
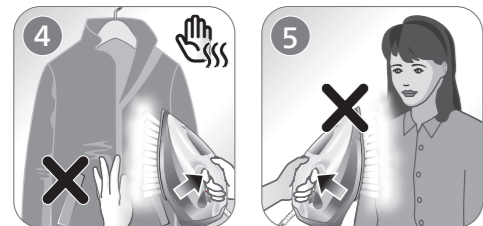


**2** 

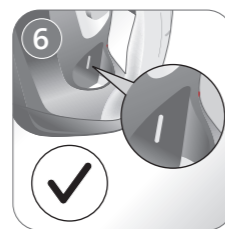
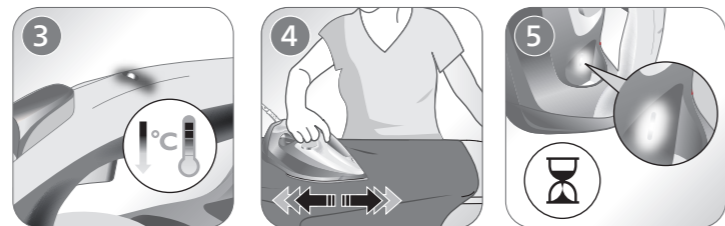
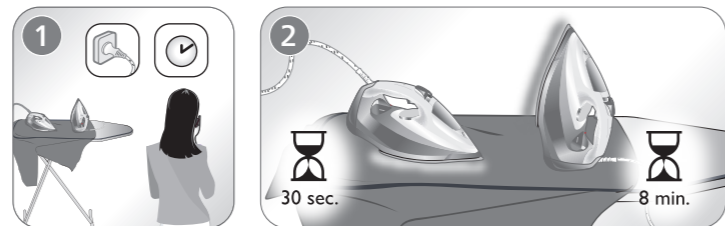
[www.philips.com/support](http://www.philips.com/support)



EN Press and hold  
ES-XL Mantenga presionado

**3**  

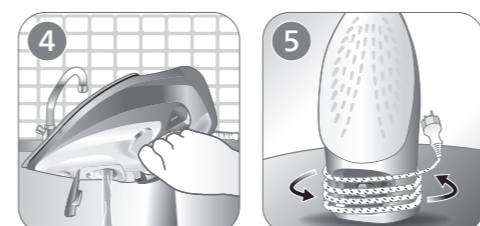
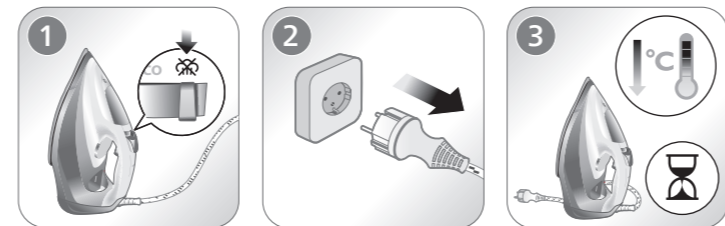
DST703X, DST704X DST705X,  
DST706X DST751X



EN Specific types only  
ES-XL Solo modelos específicos

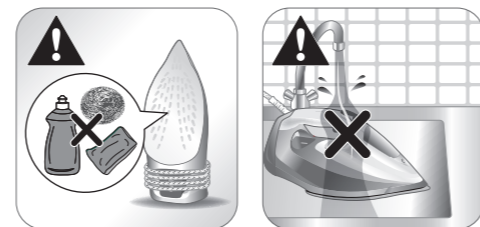
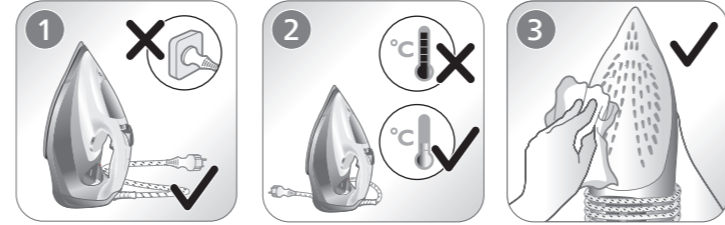
**4** 

[www.philips.com/support](http://www.philips.com/support)



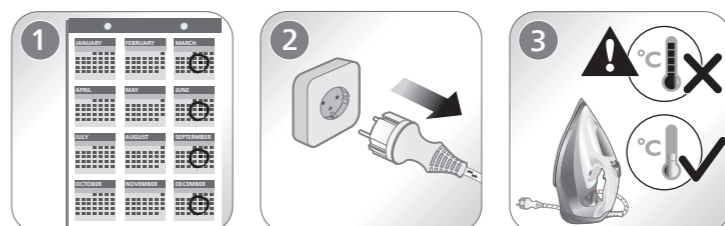
**5** 

[www.philips.com/support](http://www.philips.com/support)



**6**   

[www.philips.com/support](http://www.philips.com/support)



**PHILIPS**

Azur 7000 series  
Azur 7500 series

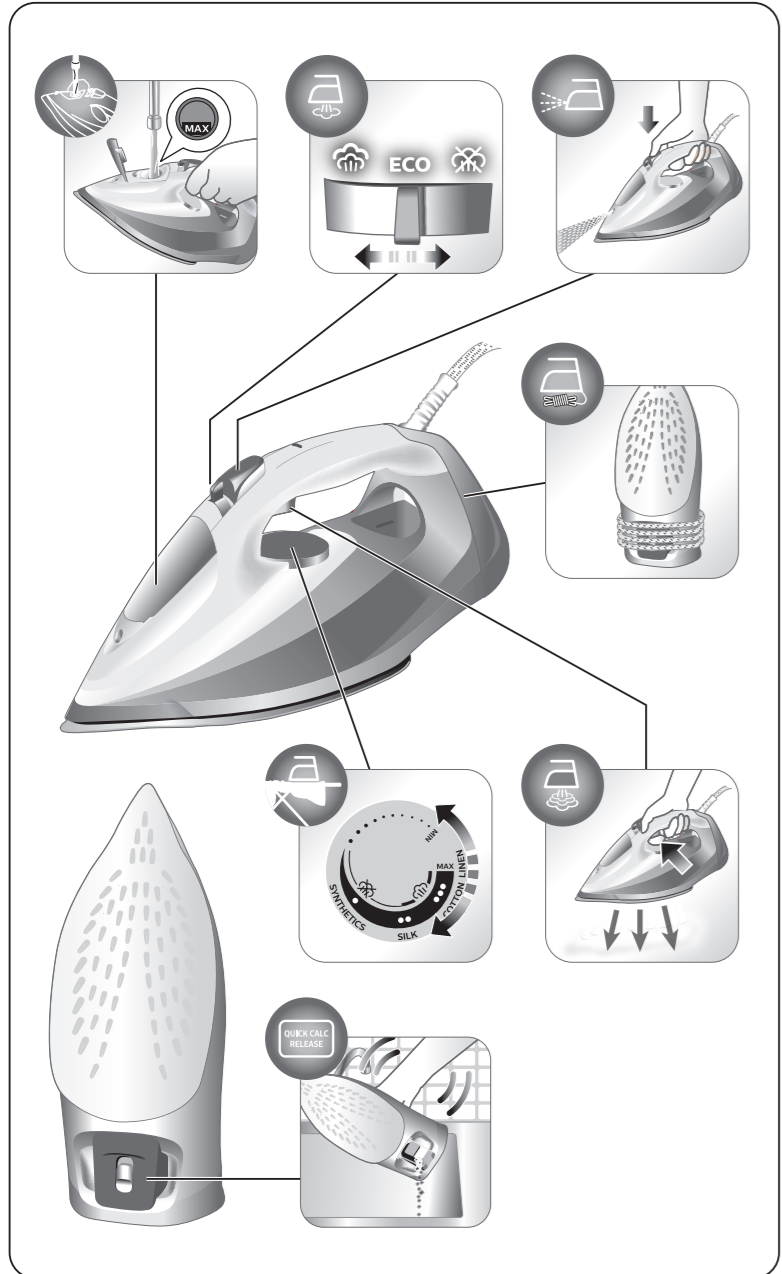


EN User manual

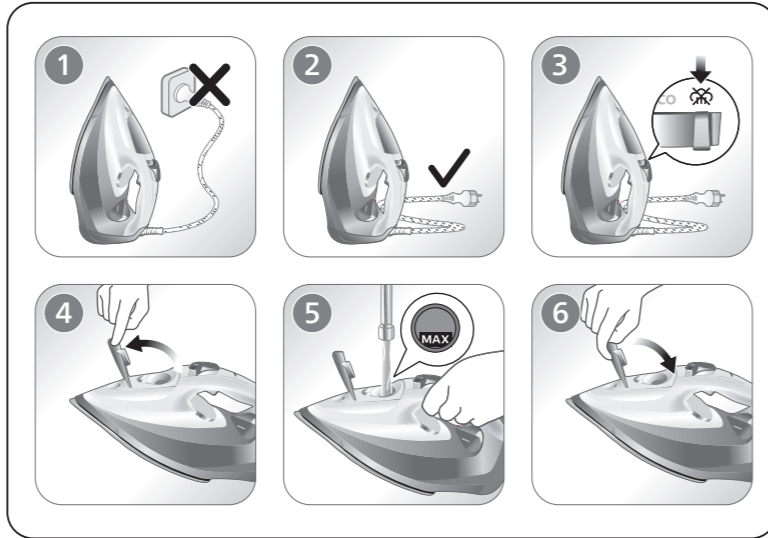
ES-XL Manual del usuario



[www.philips.com/support](http://www.philips.com/support)



[www.philips.com/support](http://www.philips.com/support)

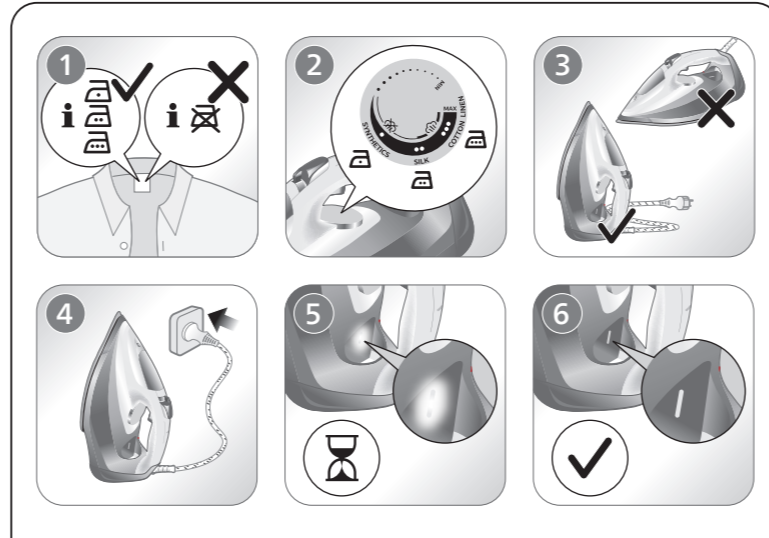


[www.philips.com/support](http://www.philips.com/support)

	MAX (MÁX) LINEN (LINO)	
	COTTON (ALGODÓN)	
	SILK (SEDA)	ECO
	SYNTHETICS (SINTÉTICA)	



[www.philips.com/support](http://www.philips.com/support)

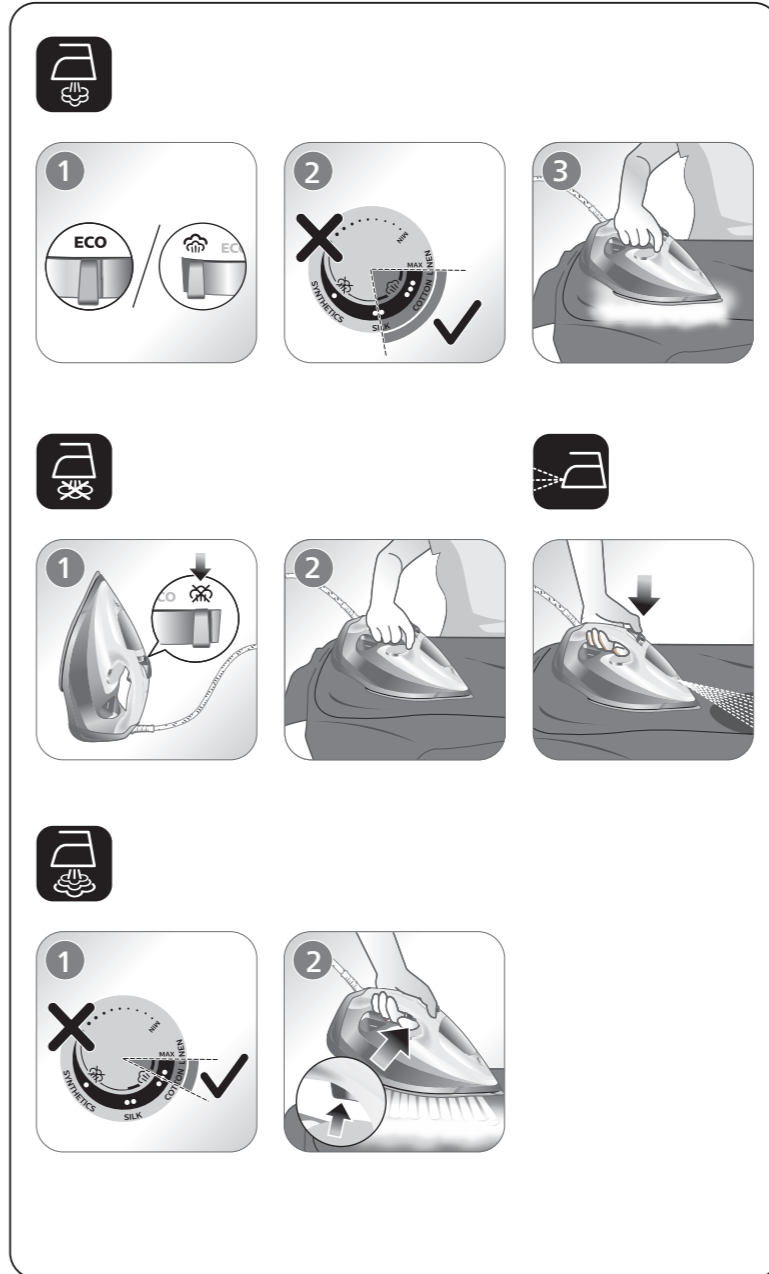


**EN** **Preparing for use**  
Smoke can be visible during the first use, and it is normal. This ceases after a short while.

**ES-XL** **Preparación inicial**  
Es normal ver humo durante el primer uso. Dejará de ocurrir al cabo de un rato.



[www.philips.com/support](http://www.philips.com/support)



PHILIPS and the Philips Shield Emblem are registered trademarks of Koninklijke Philips N.V. and are used under license. This product has been manufactured by and is sold under the responsibility of Versuni Holding B.V., and Versuni Holding B.V. is the warrantor in relation to this product. 2023 © Versuni Holding B.V. 6420.010.0129.7 (20/06/2023)

